

(12) United States Patent
Barna et al.

(10) Patent No.: US 6,445,022 B1
(45) Date of Patent: Sep. 3, 2002

(54) INCREASING PIXEL CONVERSION GAIN IN CMOS IMAGE SENSORS

(75) Inventors: Sandor L. Barna, Pasadena; Eric R. Fossum, La Crescenta, both of CA (US)

(73) Assignee: Micron Technology, Inc., Boise, ID (US)

(*) Notice: Subject to any disclaimer, the term of this patent is extended or adjusted under 35 U.S.C. 154(b) by 0 days.

(21) Appl. No.: 09/553,980

(22) Filed: Apr. 20, 2000

Related U.S. Application Data

(60) Provisional application No. 60/130,998, filed on Apr. 23, 1999.

(51) Int. Cl.⁷ H01L 31/119; H01L 31/113

(52) U.S. Cl. 257/292; 257/291; 257/461; 250/370.08; 250/370.14; 250/370.15; 327/514; 327/515

(58) Field of Search 257/292, 290, 257/291, 461; 250/370.08, 370.14, 370.15; 327/514, 515

(56) References Cited

U.S. PATENT DOCUMENTS

6,043,525 A * 3/2000 Chen 257/292

* cited by examiner

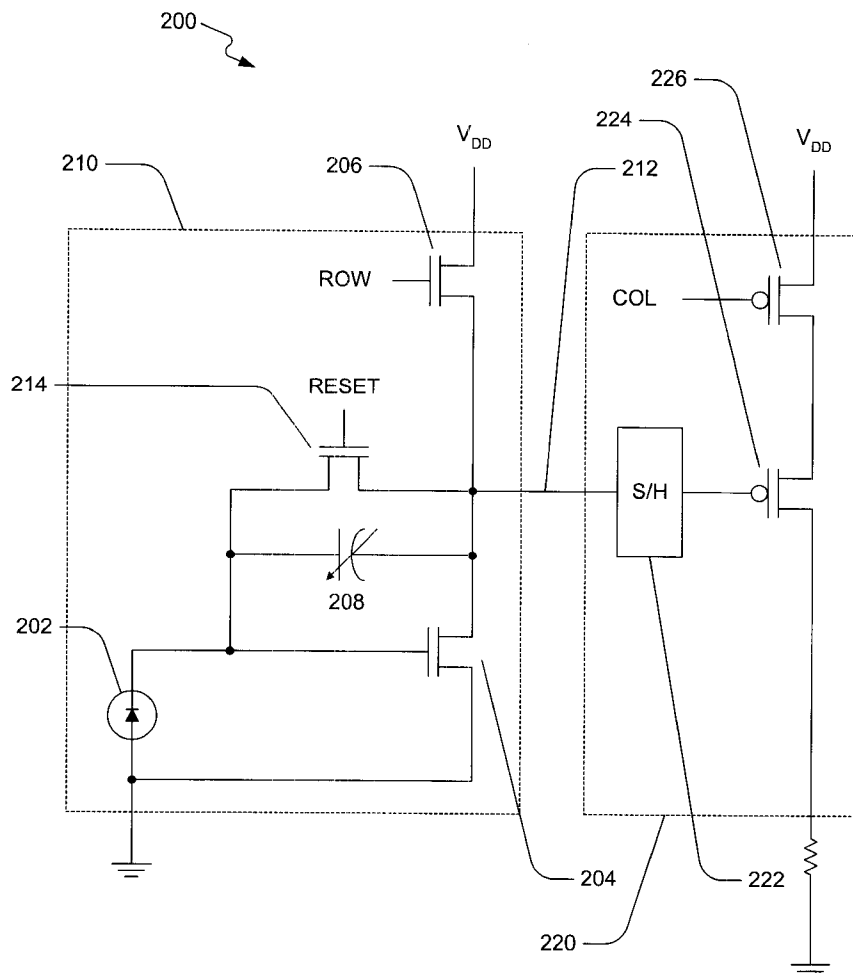
Primary Examiner—Ngân V. Ngô

(74) Attorney, Agent, or Firm—Fish & Richardson P.C.

(57) ABSTRACT

A pixel sensor system that includes a photo-sensor, an output amplifier, and a feedback capacitor. The photo-sensor is configured to receive photons and to convert the photons into charge. The output amplifier has at least two transistors in a cascoded configuration. The amplifier converts the charge into electronic signal. The feedback capacitor is disposed between the photo-sensor and an input of the output amplifier.

18 Claims, 5 Drawing Sheets



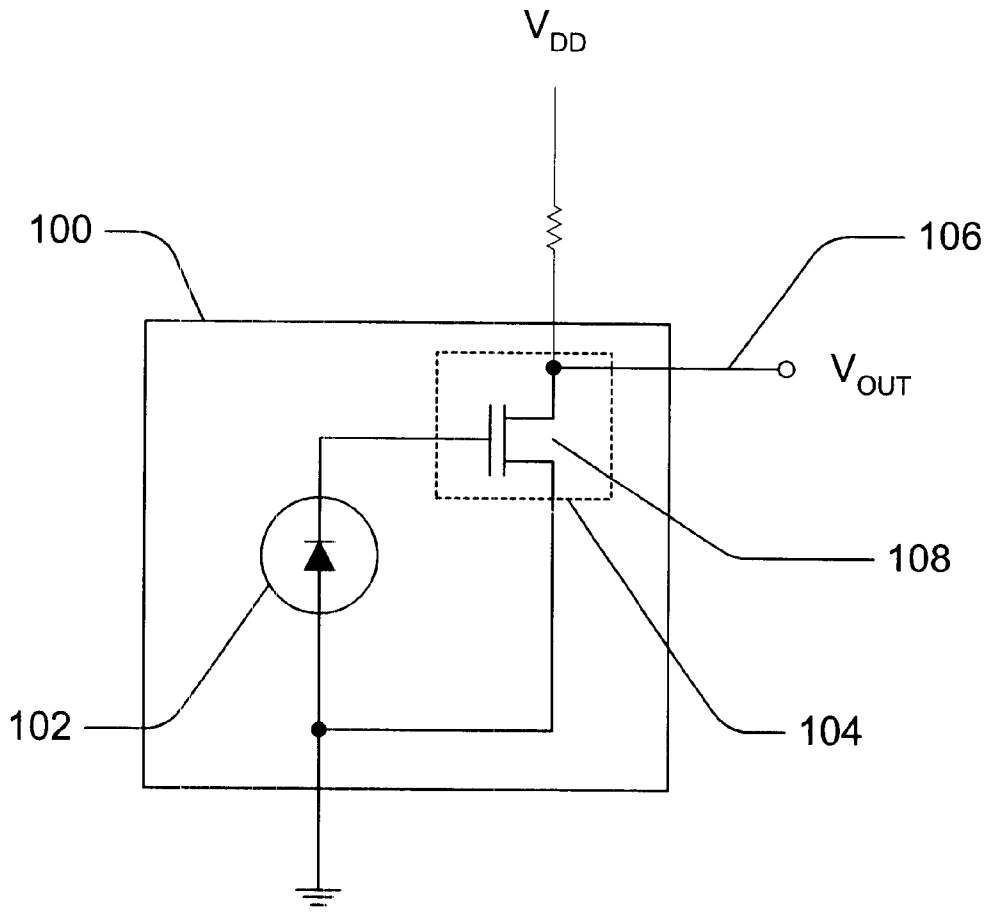


FIG. 1
(PRIOR ART)

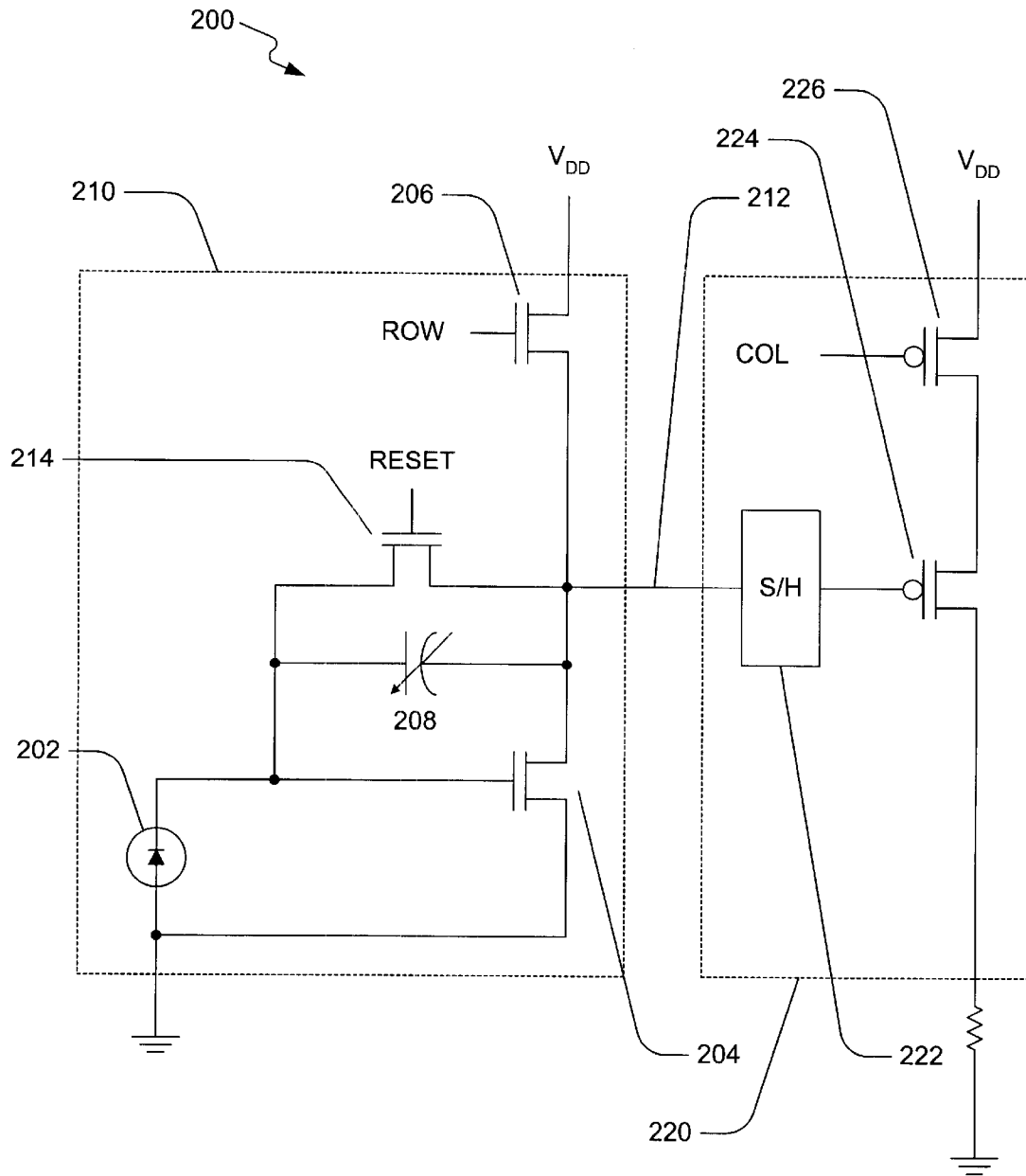


FIG. 2

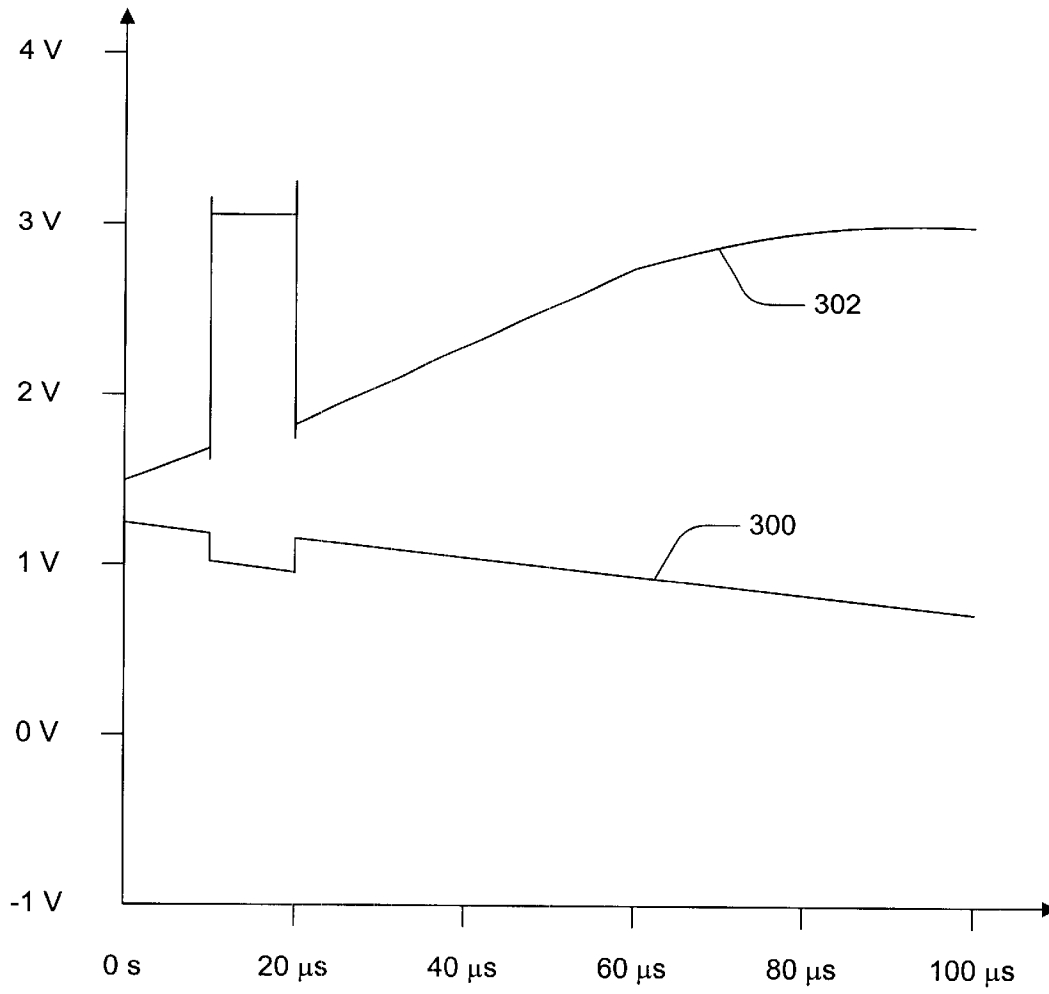


FIG. 3

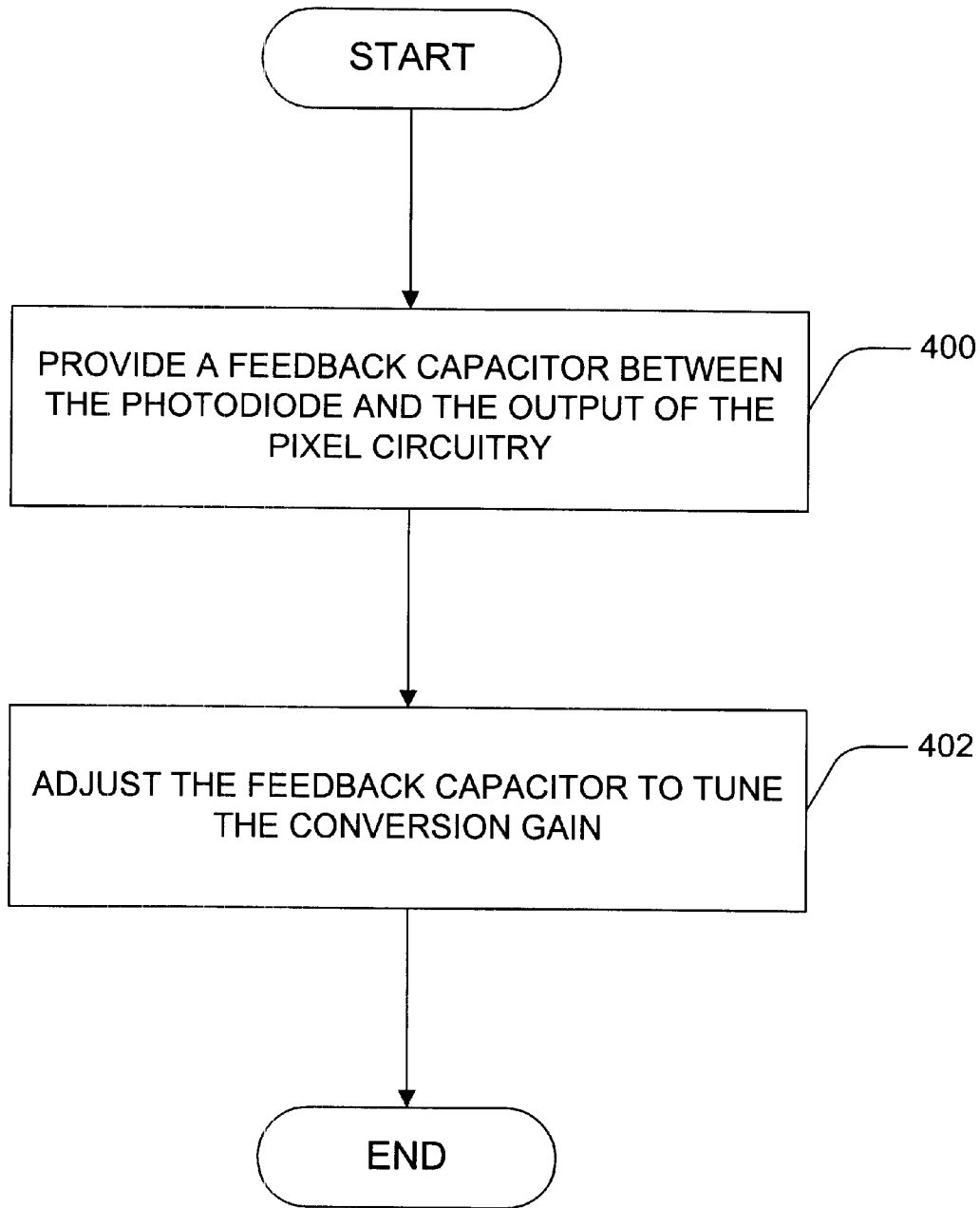


FIG. 4

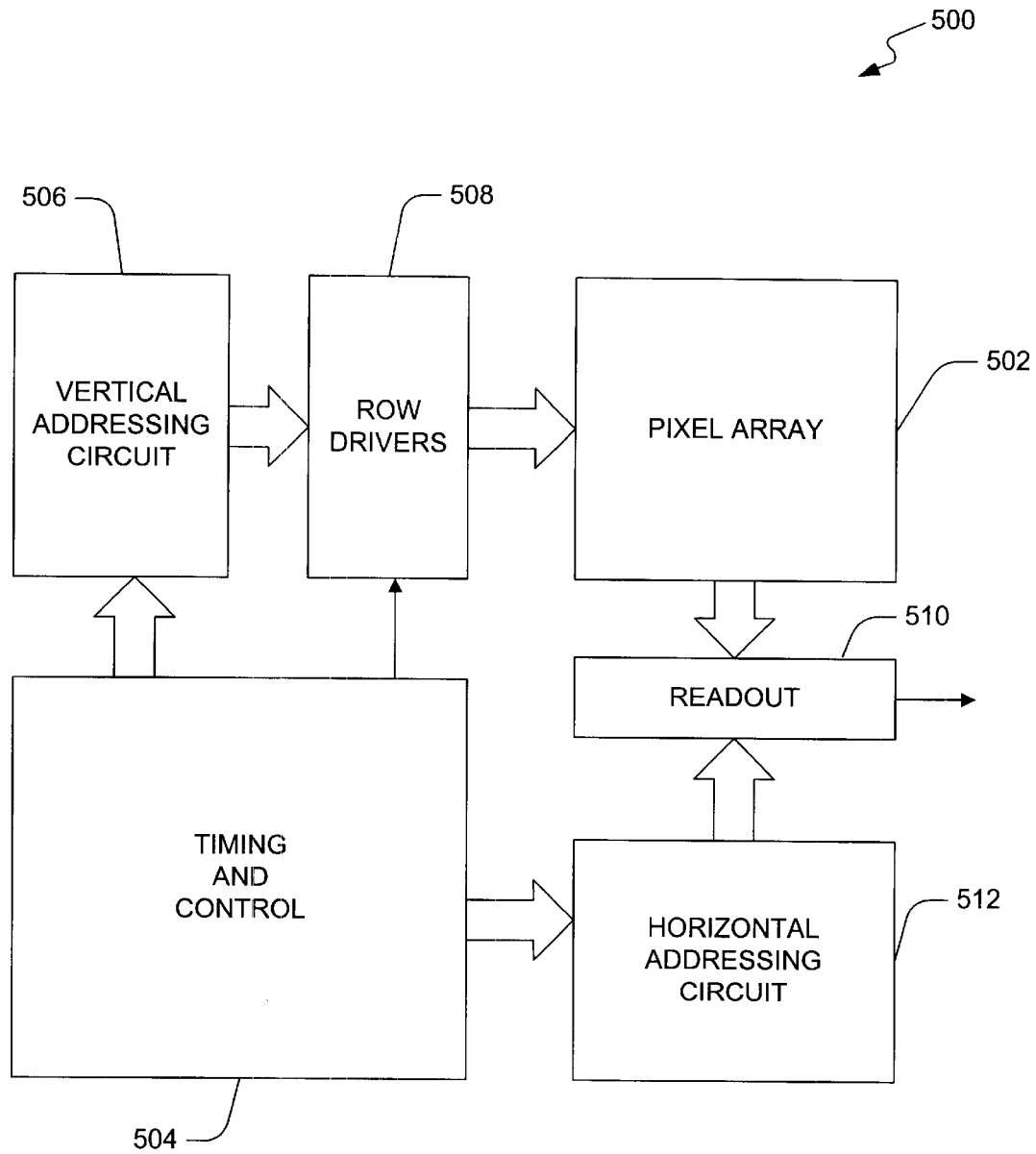


FIG. 5

INCREASING PIXEL CONVERSION GAIN IN CMOS IMAGE SENSORS

CROSS-REFERENCE TO RELATED APPLICATION

This application claims benefit of the priority of U.S. Provisional Application Ser. No. 60/130,998, filed Apr. 23, 1999 and entitled "A Method for Increasing Pixel Conversion Gain", the content of which is herein incorporated by reference in its entirety.

BACKGROUND

The present disclosure relates to a technique of increasing pixel conversion gain in a CMOS image sensor, specifically an active pixel sensor.

Electronic image sensors obtain an electrical image of a subject. The sensor converts the incoming light photons to an electronic signal. The sensitivity of conversion between the photons and electrons is often measured with a quantity called conversion gain.

Many image sensor devices convert the incoming photons to charge using a photo-gate. That charge is stored in a substrate. Other devices convert the incoming photons to electrons using a photodiode. In the devices using photodiodes, it was found to be advantageous to enlarge the size of the photodiode. The large size allows more light to be received by the photodiode.

The conversion gain of a photodiode pixel, expressed in volts per photon, is often inversely proportional to pixel size. Thus, although the number of incident photons on a pixel increases with pixel area, the corresponding reduction in conversion gain prevents a matching increase in pixel sensitivity. This is often addressed by using photo-gate pixels or other structures that isolate the sensor node of the pixel from the collection area. However, these solutions often involve an increase in the number of transistors within the pixel. The increase in the transistor count reduces fill factor. Further, the source follower output stage introduces a non-linearity in pixel response.

SUMMARY

In one embodiment of the present invention, a pixel sensor system is disclosed. The system includes a photo-sensor, an output amplifier, and a feedback capacitor. The photo-sensor is configured to receive photons and to convert the photons into charge. The output amplifier has at least two transistors in a cascoded configuration. The amplifier converts the charge into electronic signal. The feedback capacitor is disposed between the photo-sensor and an input of the output amplifier.

In another embodiment of the present invention, a method for increasing a pixel conversion gain is disclosed. The method includes providing a feedback capacitor between a photo-sensor and a pixel circuit, and adjusting the feedback capacitor to increase pixel sensitivity.

In a further embodiment, an image sensor is disclosed. The sensor includes an array of pixel sensors. Each sensor includes a photo-sensor, an output amplifier, and a feedback capacitor. The photo-sensor is configured to receive photons and to convert them into charge. The output amplifier includes at least two transistors in a cascoded configuration. The amplifier converts the charge into electronic signal. The feedback capacitor is disposed between the photo-sensor and an input of the output amplifier. The image sensor further includes a controller configured to provides timing and control signals to enable read out of signals stored in each pixel sensor.

BRIEF DESCRIPTION OF THE DRAWINGS

Different aspects of the disclosure will be described in reference to the accompanying drawings wherein:

FIG. 1 shows a schematic representation of a conventional photodiode pixel;

FIG. 2 is a schematic diagram of an image sensor system according to an embodiment of the present invention;

FIG. 3 shows plots of photodiode and output voltage measured with a simulation of the circuit shown in FIG. 2;

FIG. 4 is a flowchart for increasing a pixel conversion gain in accordance with an embodiment of the present invention; and

FIG. 5 an exemplary block diagram of a CMOS image sensor integrated circuit chip.

DETAILED DESCRIPTION

A schematic representation of a conventional photodiode pixel is shown in FIG. 1. Each pixel **100** includes a photodiode area **102** and associated circuitry area **104**. The device shown in FIG. 1 is an "active pixel" which means that each pixel includes at least some circuitry associated with the pixel and actually formed within the pixel. Circuitry **104** is shown schematically as including a source follower transistor **108**, but it should be understood that other associated circuitry may also be integrated into the pixel. That associated circuitry is preferably formed of NMOS or CMOS.

The source follower transistor **108** in an active pixel sensor converts the accumulated charge from the photodiode **102** into a voltage. The voltage V at node **106** is proportional to charge Q received by the photodiode **102** divided by the photodiode capacitance C . However, it was found that increasing the diode size decreases the conversion gain ($V/\text{photon count}$), since it correspondingly increases the photodiode capacitance more than the associated increase in charge. Thus, an increase in diode size effectively reduces the light sensitivity of a pixel.

In recognition of the above-described problems with the prior design, the inventors have developed a system for increasing the pixel conversion gain. In some embodiments, the system allows adjustment of the conversion gain independent of the photodiode size, and hence, its capacitance.

A schematic diagram of a system **200** according to an embodiment of the present invention is shown in FIG. 2. In the illustrated embodiment, a CMOS active pixel sensor **210** may include a photodiode **202** buffered by a cascoded inverting amplifier having two MOSFET transistors **204**, **206**. In this embodiment, the transistors **204**, **206** are n-channel MOSFET transistors.

A signal 'ROW' is applied to the gate of the row selection transistor **206** to enable a particular row of pixels. When the row is not selected, the cascoded amplifier is turned off. In this state, the photodiode **202** accumulates charge. When the row is selected, current flows through the cascoded amplifier. In this state, the accumulated charge is transferred to a feedback capacitor (C_f) **208**.

In the illustrated embodiment, the output voltage V_{out} at node **212** is the product of the accumulated charge Q and the feedback capacitance, C_f :

$$V_{OUT} = \frac{Q}{C_d / C_f} = \frac{Q * C_f}{C_d} \quad (1)$$

Therefore, the conversion gain of the pixel amplifier is the ratio of the photodiode capacitance (C_d) to the feedback capacitance (C_f):

$$G = \frac{V_{OUT}}{\text{no. of photons}} = \frac{Q \cdot (C_f / C_d)}{\text{no. of photons}} \quad (2)$$

The equations (1) and (2) highlight the advantages of having a feedback capacitor **208** in the active pixel sensor **210**. The feedback capacitor **208** enables increase in pixel conversion gain by adjusting the ratio of the photodiode capacitance to the feedback capacitance.

Closing the reset switch **214** while the row is selected resets the pixel. This removes the charge on the feedback capacitor **208**, and restores the photodiode voltage to the quiescent operating voltage of the amplifier. This voltage is dependent on the specific properties of the transistors **204**, **206**, **214**. Thus, the reset level will also need to be sampled to remove fixed pattern noise. A sample-and-hold circuit **222** in the column readout circuit **220** samples both the signal and the reset values.

In the illustrated embodiment of FIG. 2, a p-type cascoded amplifier having two p-channel MOSFET transistors **224**, **226** is shown. The cascoded amplifier in the output stage of the column readout circuit **220** substantially reduces non-linearity in pixel response.

The gain transistor **224** may be operated in common-emitter or common-collector mode that utilizes a second transistor **226** in a common-base mode. The emitter of the second transistor **226** is connected to the collector of the gain transistor **224**. Having substantially unity current gain, wide bandwidth, and low distortion, the second transistor **226** shields the gain transistor **224** from voltage changes in the circuit.

FIG. 3 shows plots of photodiode and output voltage measured with a simulation of the circuit shown in FIG. 2. The curve **300** is the photodiode voltage measured from the integration of the photocurrent. The curve **302** is the output voltage of the amplifier. In the illustrated embodiment, the row is unselected at 10 μs and re-selected at 20 μs . A steady source of current is applied at the photodiode. As the simulation shows, the disconnection of the current source does not significantly affect the integration of the charge on the photodiode. Therefore, it is shown that the cascoded amplifier in the output stage promotes substantial linearity in pixel response.

FIG. 4 illustrates a technique for increasing a pixel conversion gain in accordance with an embodiment of the present invention. In the illustrated flowchart, the technique involves providing a feedback capacitor between a photodiode and an output of the pixel circuitry at **400**. At **402**, the feedback capacitor may be adjusted to tune the conversion gain. In some embodiments, the conversion gain is tuned to increase the pixel sensitivity.

FIG. 5 shows an example of a CMOS image sensor integrated circuit chip **500**. The chip **500** includes an array of active pixel sensors **502** and a controller **504**. The controller **504** provides timing and control signals to enable read out of signals stored in the pixels. For some embodiments, arrays can have dimensions of 128x128 or larger number of pixels. However, in general, the size of the array **502** will depend on the particular implementation. The image array **502** is read out a row at a time using column-parallel readout architecture. The controller **504** selects a particular row of pixels in the array **502** by controlling the operation of vertical addressing circuit **506** and row drivers **508**. Charge signals stored in the selected row of pixels are

provided to a readout circuit **510**. Each pixel in the array **502** includes a feedback capacitor to enable adjustment of conversion gain. The pixels read from each of the columns can be read out sequentially using a horizontal addressing circuit **512**.

While specific embodiments of the invention have been illustrated and described, it will be obvious to those skilled in the art that various changes and modifications may be made without sacrificing the advantages provided by the principles disclosed herein. For example, even though the present system has been described in terms of a photodiode pixel sensor, the system may be practiced with other photo-sensors. Accordingly, the invention may be embodied in other specific forms without departing from its spirit or essential characteristics.

All these are intended to be encompassed by the following claims.

What is claimed is:

1. A pixel sensor system, comprising:

a photo-sensor configured to receive photons and to convert said photons into charge;
an output amplifier having at least two transistors in a cascoded configuration, said amplifier operating to convert said charge into electronic signal; and
a feedback capacitor disposed between said photo-sensor and an input of said output amplifier.

2. The system of claim 1, wherein said photo-sensor is a photodiode.

3. The system of claim 1, wherein said at least two transistors includes n-channel MOSFET transistors.

4. The system of claim 1, wherein said at least two transistors enables toggling between at least two states, one of said at least two states allowing accumulation of charge in said photo-sensor, and another of said at least two states allowing transfer of accumulated charge from said photo-sensor to said feedback capacitor.

5. The system of claim 4, further comprising:

a reset switch coupled in parallel with said feedback capacitor, said reset switch operating to remove the accumulated charge on said feedback capacitor and restore said photo-sensor to quiescent operating state.

6. The system of claim 1, wherein one of said at least two transistors is enabled when a particular row is selected.

7. The system of claim 1, wherein said electronic signal is a voltage.

8. A CMOS active pixel sensor, comprising:

a photodiode arranged to receive light and convert said received light into charge;

first and second transistors configured in a cascoded configuration, said first transistor allowing accumulation of charge in said photodiode, and said second transistor allowing transfer of accumulated charge from said photodiode to a feedback capacitor, said first and second transistors operating to convert said charge into electronic signal; and

the feedback capacitor disposed between said photodiode and an input of said second transistor.

9. The sensor of claim 8, wherein said first and second transistors include n-channel MOSFET transistors.

10. The sensor of claim 8, further comprising:

a reset transistor coupled in parallel with said feedback capacitor, said reset transistor operating to remove the accumulated charge on said feedback capacitor and restore said photodiode to quiescent operating state.

5

- 11. An image sensor, comprising:
 an array of pixel sensors, each sensor having
 a photo-sensor configured to receive photons and to
 convert said photons into charge,
 an output amplifier having at least two transistors in a
 cascoded configuration, said amplifier operating to
 convert said charge into electronic signal, and
 a feedback capacitor disposed between said photo-
 sensor and an input of said output amplifier; and
 a controller configured to provides timing and control
 signals to enable read out of signals stored in each pixel
 sensor.
- 12. The sensor of claim 11, wherein said electronic signal
 is a voltage.
- 13. The sensor of claim 12, further comprising:
 a readout circuit operating to read said voltage.

6

- 14. The sensor of claim 13, wherein said readout circuit
 includes:
 first and second transistors configured in a cascoded
 configuration to provide substantially linear pixel
 response.
- 15. A The sensor of claim 14, wherein said first and
 second transistors include p-channel MOSFET transistors.
- 16. The sensor of claim 14, wherein said first transistor is
 enable when a particular column is selected.
- 17. The sensor of claim 14, further comprising:
 a sample-and-hold circuit disposed between said output
 amplifier said second transistor, said sample-and-hold
 circuit operating to read said voltage.
- 18. The sensor of claim 17, wherein said second transistor
 is driven to provide a gain for said sample-and-hold circuit.

* * * * *